

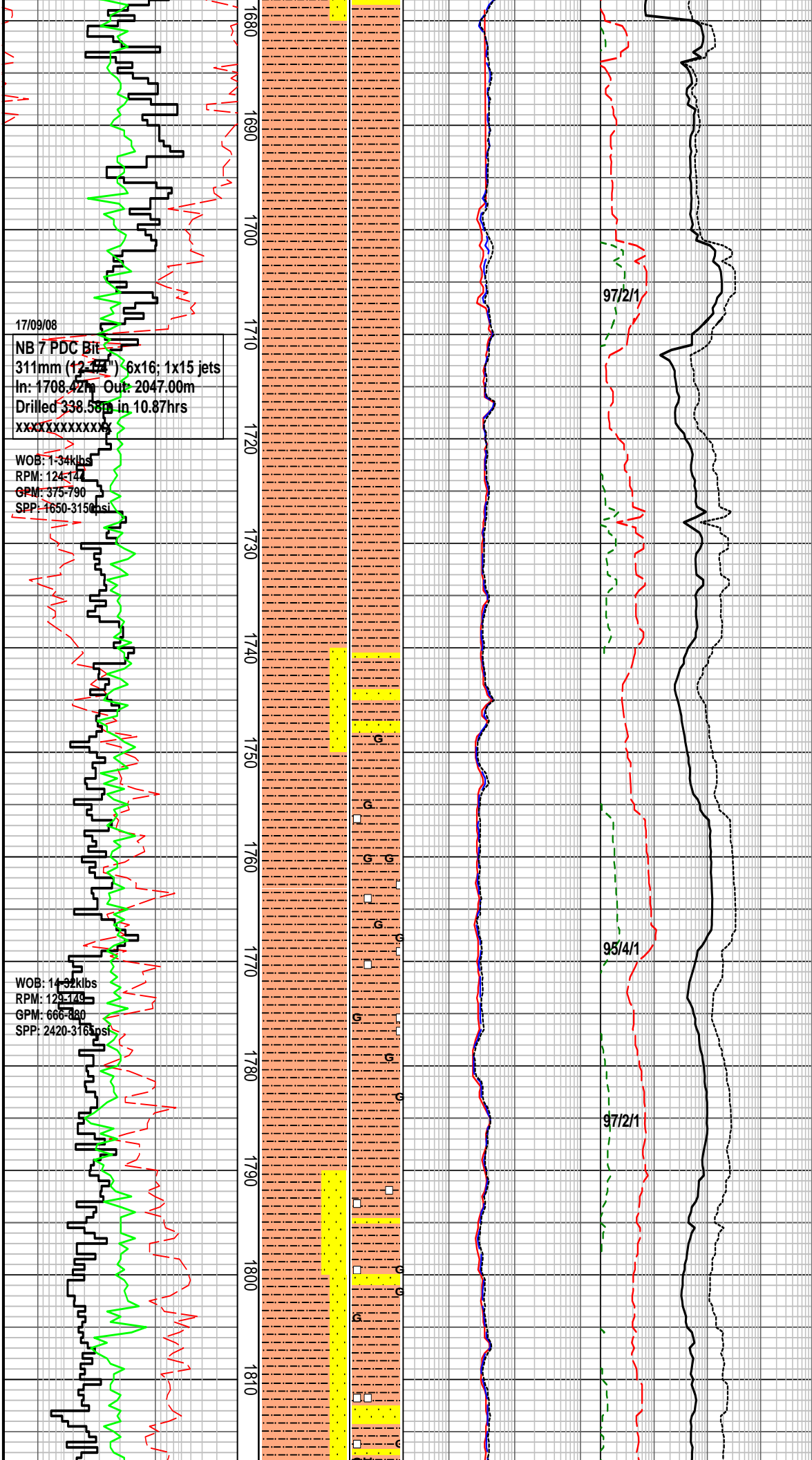
HENRY 2DW1 FORMATION EVALUATION LOG

| <p>WOB 10 20 30 40 kibr ROP 200 20 m/hr Gamma 50 100 150 200 API</p> | | <p>MD meters 1:500</p> | <p>LITHOLOGY %</p> | <p>INTERPRETED LITHOLOGY</p> | <p>RESISTIVITY</p> | <p>CHROMATOGRAPH</p> | <p>CUT FLUORESCENCE DIRECT FLUORESCENCE PFG PFG</p> | <p>CALC</p> | <p>REMARKS</p> |
|--|------------------|------------------------|--------------------|------------------------------|-------------------------------|--|--|-------------|---|
| <p>Resistivity (shallow)</p> | <p>Total Gas</p> | | | | | | | | |
| | | | | | <p>2 20 200 ohm.m</p> | <p>1 10 100 1000 unit</p> | | | |
| | | | | | <p>Resistivity (medium)</p> | <p>Methane</p> | | | |
| | | | | | <p>2 20 200 ohm.m</p> | <p>Ethane</p> | | | |
| | | | | | <p>Resistivity (deep)</p> | <p>Propane</p> | | | |
| | | | | | <p>2 20 200 ohm.m</p> | <p>i-Butane</p> | | | |
| | | | | | | <p>n-Butane</p> | | | |
| | | | | | | <p>i-Pentane</p> | | | |
| | | | | | | <p>n-Pentane</p> | | | |
| | | | | | | <p>100 1000 10000 100000 ppm</p> | | | |
| | | 1600 | | | | | | | <p>Tag Soft Cement @ 1611m</p> |
| | | 1610 | | | | | | | <p>Drill Cement from 1611m to 1628m</p> |
| | | 1620 | | | | | | | <p>Time Drill from 1628m Attempting to Sidetrack from Henry 2</p> |
| | | 1630 | | | | | | | <p>MW: 1.32 FV: 60 PV: 25 YP: 32 GELS: 11/23/32 SOL: 10.54 pH: 12.0 Ck: 1 CL: 50000</p> |
| | | 1640 | | | | | | | <p>Survey at 1632.48m Inc: 42.47° Azi: 111.06° TVD: 1485.50m</p> |
| | | 1650 | | | | | | | <p>Henry 2DW1 Sidetracked from Henry 2 wellbore from 1652m @ 05:00 hrs on 16/09/08</p> |
| | | 1660 | | | | | | | <p>SILTSTONE: pl brn, occ pl-dk brn gy, arg, rr glauc gr, mnr carb spks, v sft-disp, mod hd, amor, sblyk-blky</p> |
| | | 1670 | | | | | | | <p>SANDSTONE: off wh, v lt brnsh gy, clr-trnsl, vf-f gr,</p> |
| | | | | | | <p>98/2/tr</p> | | | |

AB 6 SMITH XR+(VCPS)
 311mm(12-1/4") 3x18; 1x19 jets
 In: 1600.00m Out: 1708.42m
 Drilled 108.42m in 21.40hrs
 0-1-WT-G-E-1/16"-NO-BHA

WOB: 1-23klbs
 RPM: 41-131
 GPM: 265-820
 SPP: 1475-2885psi

WOB: 1-44klbs
 RPM: 97-137
 GPM: 335-910
 SPP: 1815-3015psi



17/09/08
 NB 7 PDC Bit
 311mm (12 1/4") 6x16; 1x15 jets
 In: 1708.42m Out: 2047.00m
 Drilled 338.58m in 10.87hrs
 XXXXXXXXXXXXX

WOB: 1-34klbs
 RPM: 124-144
 GPM: 375-790
 SPP: 1650-3150psi

WOB: 14-32klbs
 RPM: 129-140
 GPM: 666-880
 SPP: 2420-3160psi

sbang-sbrndd, wl srt, com wk calc cmt, com off wh arg mtrx, tr glauc, fri agg, pr inf por, no fluor

SILTSTONE: pl brn-pl gy brn, mnr m-dk brn gy, arg, mnr glauc gr, v sft-disp, mnr frm-mod hd, amor, sblky-mnr blkly

Survey at 1715.86m
 Inc: 46.85°
 Azi: 112.60° TVD: 1586.90m

SILTSTONE: pl brn, occ m-dk gy brn, gen arg, mnr aren, occ-com carb spks, dom v sft-disp, frm-mod hd i/p, amor, sblky

SANDSTONE: off wh, clr-trnsl, vf-f, occ m, mod srt, sbang dom sbrnd, wk calc cmt, com off wh arg mtrx gen lse cln gr, mnr fri, pr vis & inf por, no fluor

SILTSTONE: pl-m brn, occ m gy brn, gen arg, mnr aren, occ-com carb spks, mnr glauc gr, dom v sft-disp frm-mod hd i/p, blkly-sblky, amor i/p

SILTSTONE: m brn, m gy, dk brn gy, arg, com glauc gr, mnr vf carb spks, rr nod pyr, tr micro-mic, sft-frm, mnr mod hd, sblky-mnr blkly

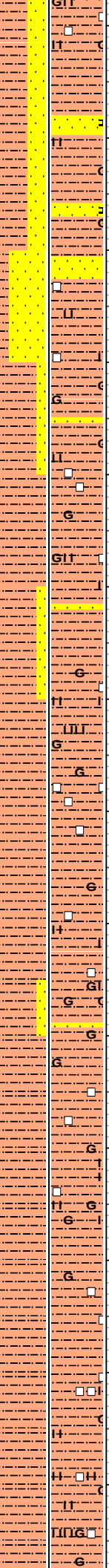
Survey at 1802.92m
 Inc: 57.48°
 Azi: 112.07° TVD: 1640.40m

WOB: 23-37klbs
RPM: 90-145
GPM: 645-860
SPP: 2433-3220

WOB: 9-39klbs
RPM: 88-102
GPM: 625-905
SPP: 2320-3220

WOB: 6-20klbs
RPM: 76-107
GPM: 645-888
SPP: 2835-3310

1820
1830
1840
1850
1860
1870
1880
1890
1900
1910
1920
1930
1940
1950



97/2/1

97/3/tr

96/3/1

SANDSTONE: off wh, clr-trnsl, vf-f gr, mod wl srt, sbang-sbrndd, tr calc cmt, tr off wh arg mtrx, gen lse cln gr, mnf fri, pr vis & inf por, no fluor

SANDSTONE: off wh, clr-trnsl, vf-f gr, mod wl srt, sbang-sbrndd, tr calc cmt, tr off wh arg mtrx, gen lse cln gr, mnf fri, pr vis & inf por, no fluor

SANDSTONE: off wh, clr-trnsl, vf-f gr, tr m gr, mod wl srt, sbang-sbrndd, tr calc cmt, tr off wh arg, mtrx, gen lse cln gr, mnf fri, pr vis & inf por, no fluor

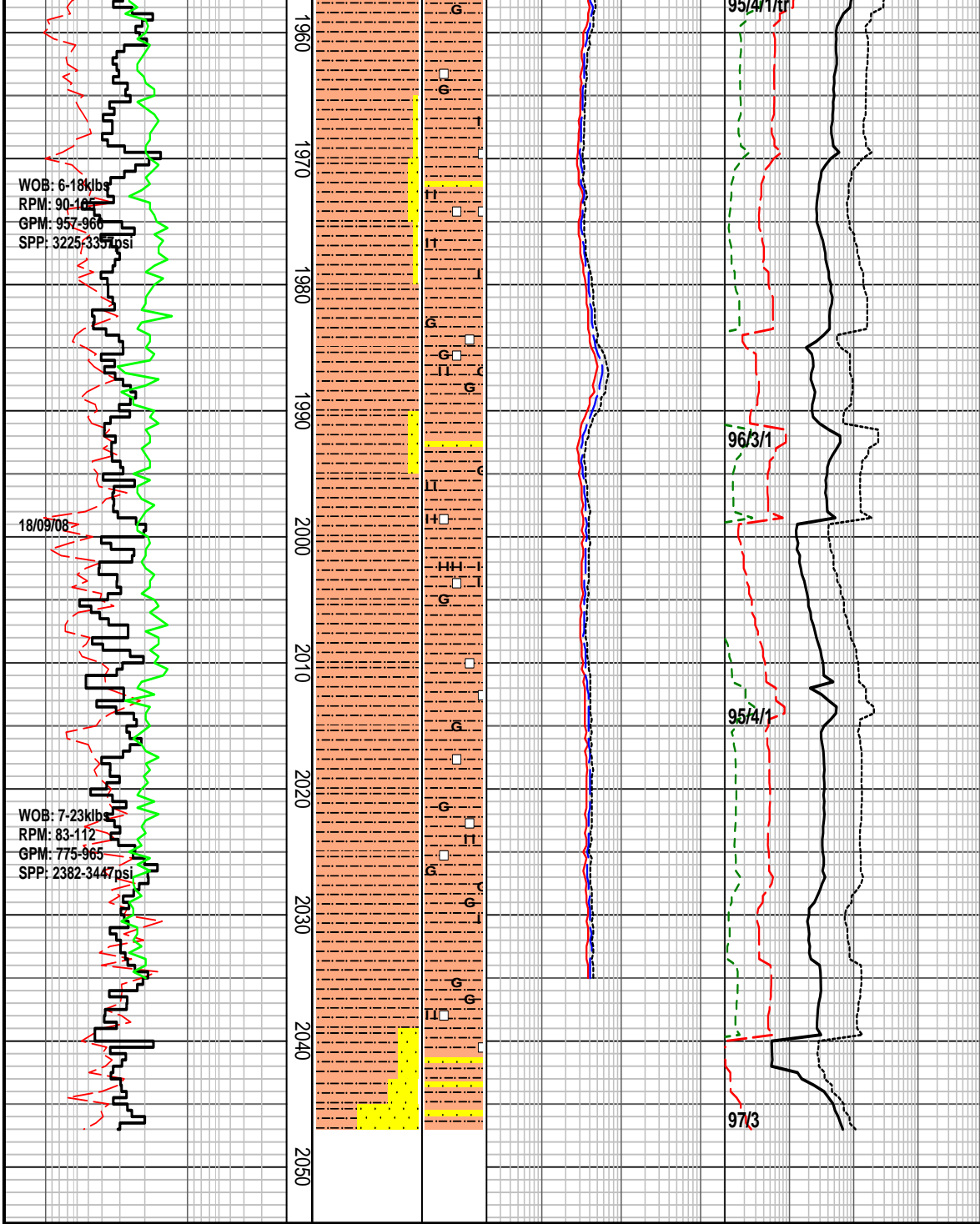
Survey at 1889.09m
Inc: 67.45°
Azi: 115.13° TVD: 1680.3m

SILTSTONE: m gy brn, lt-m gy, dk brn, arg, tr aren, com glauc gr, mnf vf carb spks, rr nod pyr, rr lt brn LST frags, tr mic-mic, sft-mod hd, sblky-blky, tr amor

SILTSTONE: gy brn, m gy, arg, tr aren, rr glauc gr, tr v f carb spks, rr nod pyr, tr mic-mic, tr brn LST frags sft-mod hd, sblky-blky

Survey at 1946.70m
Inc: 75.01°
Azi: 115.29° TVD: 1698.80m

SILTSTONE: m brn gy, m gy, arg, rr glauc gr, rr vf carb spks, rr nod pyr, tr LST frags, sft-mod hd, sblky



SANDSTONE: clr-trnsl, vf-f gr, tr m gr, mod wl srt, sbang-sbrnidd, lse cln gr, pr vis & inf por, no fluor

Survey at 1975.88m
Inc: 78.74°
Azi: 115.03° TVD: 1705.50m

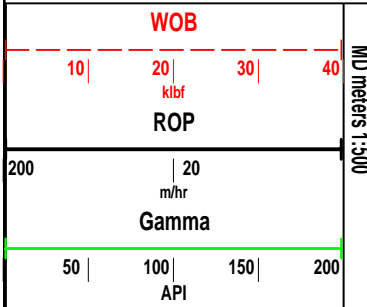
SANDSTONE: clr-trnsl, vf-f gr, tr m gr, mod wl srt, sbang-sbrnidd, lse cln gr, pr vis & inf por, no fluor

MW: 1.32 FV: 59 PV: 27 YP: 42
GELS: 12/24/35 SOL: 9.91
pH: 8.5 Ck: 0.5 CL: 49000

SILTSTONE: m gy brn, m gy, occ pl gy, arg, tr aren, com glauc gr, mnv vf carb spks, tr lt brn LST frags, tr mic mic, rr pyr nod, frm-mod hd, sbilky-bilky

SANDSTONE: pl gy-gy brn, off wh, vf, wl srt, sbang-sbrnidd, wk-mod sil cmt, com-abdt pl brn-off wh slty mtrx, occ glauc gr & carb spks, fri, v pr vis por, no fluor

HENRY 2DW1 FORMATION EVALUATION LOG



MD meters 1:500

LITHOLOGY %

| INTERPRETED LITHOLOGY | RESISTIVITY | | | CHROMATOGRAPH | | | |
|-----------------------|-----------------------|----|-----|---------------|------|-------|--------|
| | Resistivity (shallow) | | | Total Gas | | | |
| | 2 | 20 | 200 | 1 | 10 | 100 | 1000 |
| | ohm.m | | | unit | | | |
| | Resistivity (medium) | | | Methane | | | |
| | 2 | 20 | 200 | Ethane | | | |
| | ohm.m | | | Propane | | | |
| | Resistivity (deep) | | | i-Butane | | | |
| | 2 | 20 | 200 | n-Butane | | | |
| | ohm.m | | | i-Pentane | | | |
| | | | | n-Pentane | | | |
| | | | | 100 | 1000 | 10000 | 100000 |
| | | | | ppm | | | |

CALC

CUT FLUORESCENCE

DIRECT FLUORESCENCE

PPG

REMARKS

